

ERRATA

Volume 102, Number 1, September 16, 1981

In "Nucleotide Sequence of the Gene Coding for the  $\delta$  Subunit of Proton-Translocating ATPase of *Escherichia coli*," by Kazunori Mabuchi, Hiroshi Kanazawa, Toshiaki Kayano, and Masamitsu Futai, pages 172-179, in the Summary (line 8) and the text (page 175, line 4) the value of the  $\alpha$ -helix content should be 61.0% rather than 60.2%. In Fig. 2, nucleotides 174 and 349 should be C and A, respectively. The following values in the text should be corrected: on page 174, line 4, 176 should be 177; on page 174, line 11, 19,582 should be 19,558; and on page 177, line 2, 56% should be 50%.

---

Volume 103, Number 1, November 16, 1981

In "Anomalies in the Guanosine Polyphosphate Metabolism: Effect of the *hisU* Mutation," by Donella Wilson, John P. Davidson, and L. S. Williams, pages 319-326, on pages 322 and 323, Figs. 2 and 3 were accidentally transposed.

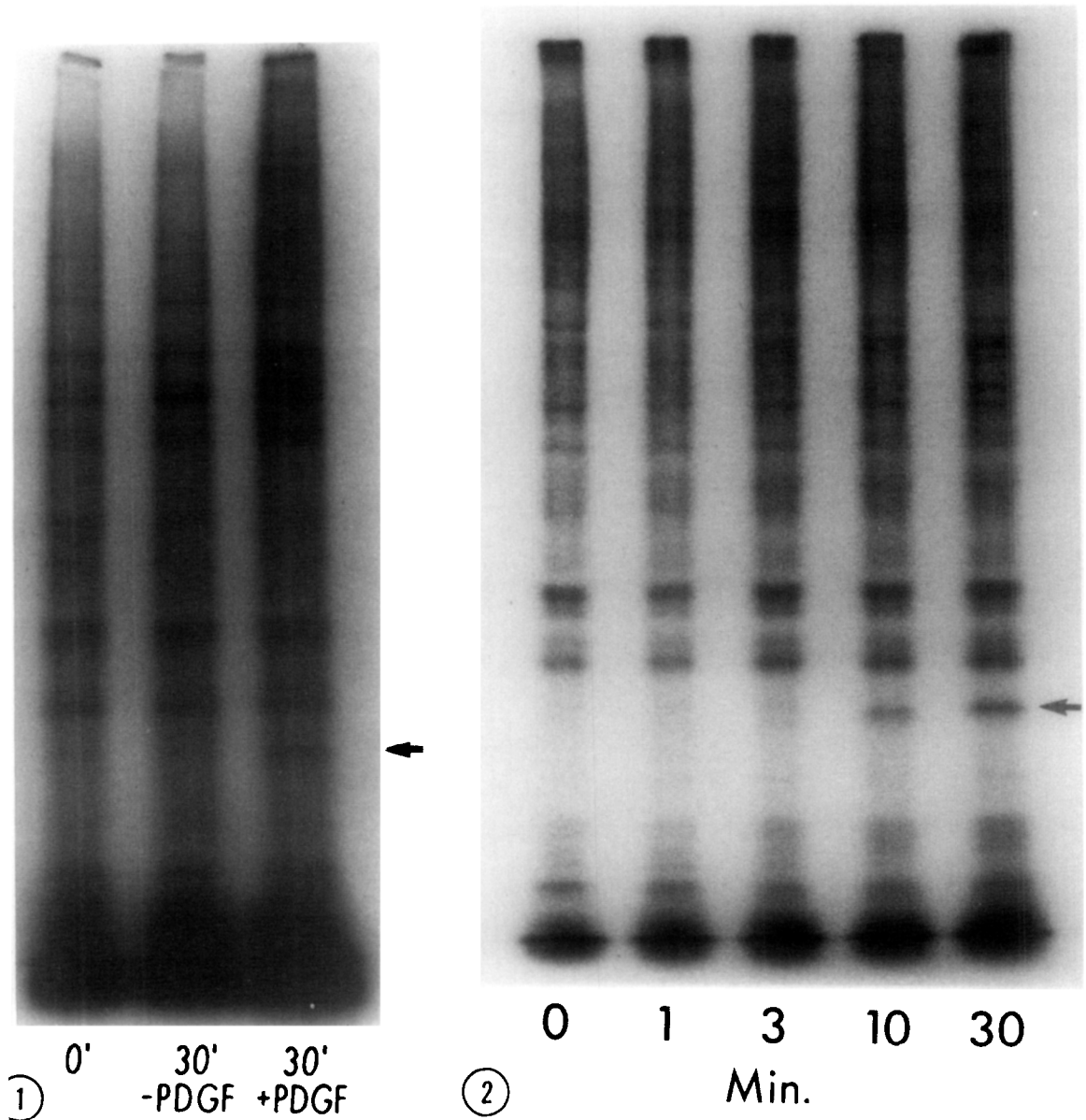
---

Volume 103, Number 2, November 30, 1981

In "An Estrogen-Stimulated 1,25-Dihydroxyvitamin D<sub>3</sub> Receptor in Rat Uterus," by Marian R. Walters, on pages 721-726, an oversight was made in the acknowledgmer on page 726. The author wishes to acknowledge the partial support of this work by the Cancer Association of Greater New Orleans.

Volume 103, Number 1, November 16, 1981

In "Stimulation of Protein Phosphorylation in Swiss Mouse 3T3 Cells by Human Platelet Derived Growth Factor," by Junji Nishimura and Thomas F. Deuel, pages 355-361, Figs. 1 and 2 on pages 357 and 358 were poorly reproduced, due to a printer's error. Therefore the figures are repeated here.



**Figure 1.** Radioautograms of SDS polyacrylamide gels of cell extracts incubated with (+) or without (-) PDGF at 25 ng/ml for 30 min. A 0 time control cell extract is included also. The arrow points to proteins migrating at  $M_r \approx 33,000$ .

**Figure 2.** Time course of the phosphorylation reaction. Radioautograms were prepared from cell extracts from cultures obtained at 0, 1, 3, 10 and 30 min after PDGF (25 ng/ml) was added. The arrow points to proteins migrating at  $M_r \approx 33,000$ .